

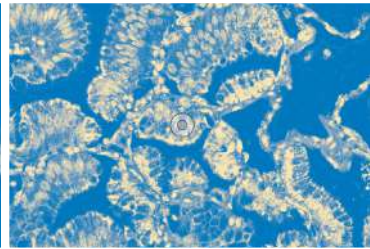
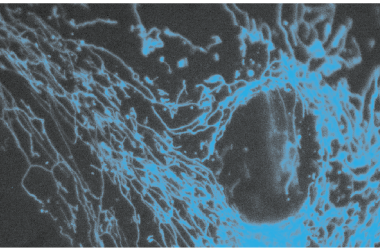
6<sup>TH</sup>

EDITION

# METABOLISM & CANCER

CONVENTION CENTER - LA GRANDE-MOTTE, FRANCE

OCTOBER  
8<sup>th</sup> - 10<sup>th</sup>  
2025



## SCIENTIFIC COMMITTEE

**Laurent LE CAM,**  
*IRCM, Montpellier,*

**Frédéric BOST,**  
*C3M, Nice,*

**Alice CARRIER,**  
*CRCM, Marseille,*

**Nathalie MAZURE,**  
*C3M, Nice,*

**Jean-Ehrland RICCI,**  
*C3M, Nice,*

**Stéphane ROCCHI,**  
*C3M, Nice*

**Rodrigue ROSSIGNOL,**  
*MRGM, Bordeaux,*

**Jean-Emmanuel SARRY,**  
*CRCT, Toulouse,*

**Sophie VASSEUR,**  
*CRCM, Marseille*

# PRELIMINARY PROGRAM

[WWW.METABOLISM-CANCER.COM](http://WWW.METABOLISM-CANCER.COM)

# PROGRAM AT A GLANCE



## MAIN TOPICS

- HOST METABOLIC REPROGRAMMING
- STEM CELLS AND METABOLISM
- METABOLISM-DRIVEN EPIGENETICS / EPITRANSCRIPTOMICS
- METABOLIC CONTROL OF DRUG RESISTANCE, THERAPY AND BIOMARKERS

## Wednesday October 8<sup>th</sup> 2025

13:20	Opening and introduction
13:30	Opening Keynote
14:00	<b>SESSION 1 - HOST METABOLIC REPROGRAMMING</b>
15:00	<b>HOST METABOLIC REPROGRAMMING</b>
14:00	Microbiome, metabolism and cancer
15:00	Coffee break & Exhibition visit
16:00	<b>SESSION 1 - HOST METABOLIC REPROGRAMMING</b>
18:00	<b>HOST METABOLIC REPROGRAMMING</b>
16:00	Cachexia and cancer
16:55	Microenvironnement
18:10	Welcome cocktail
19:30	<b>POSTER SESSION 1</b>

## Thursday October 9<sup>th</sup> 2025

09:00	<b>SESSION 2 - STEM CELLS AND METABOLISM</b>
10:20	<b>STEM CELLS AND METABOLISM</b>
10:20	Coffee break & Exhibition visit
11:00	<b>SESSION 2 - STEM CELLS AND METABOLISM</b>
12:05	<b>STEM CELLS AND METABOLISM</b>
12:05	Lunch break
14:00	Lunch break
13:15	Meet the editor session
14:00	<b>POSTER SESSION 2</b>
15:30	<b>SESSION 3 - EPIGENETICS, EPITRANSCRIPTOMICS AND METABOLISM</b>
17:00	<b>EPIGENETICS, EPITRANSCRIPTOMICS AND METABOLISM</b>
17:00	<b>POSTER SESSION 3</b>
18:30	<b>POSTER SESSION 3</b>
20:00	Congress dinner



# CONFIRMED SPEAKERS

Ilaria ELIA, *Louvain, Belgium*

Michaela FRYE, *Heidelberg, Germany*

Francois FUKS, *Brussels, Belgium*

Filipe GOMEZ CABRIERO,  
*Cologne, Germany*

Laura GREAVES, *New Castle, U.K.*

Marcia HAIGIS, *Boston, USA*

Felix HARTMANN, *Heidelberg, Germany*

Elisabeth LETELLIER, *Luxembourg*

Emanuelle PASSEGUÉ, *New-York, USA*

Jean-Ehrland RICCI, *Nice, France*

Raphaël RODRIGUEZ, *Paris, France*

Maria ROHM, *Munich, Germany*

Sara SDELICI, *Barcelona, Spain*

Saverio TARDITO, *Vienna, Austria*

Matthew Van Der HEIDEN, *Cambridge, USA*

## Friday October 10<sup>th</sup> 2025

09:00 09:50	<b>SESSION 4 - METABOLIC CONTROL OF DRUG RESIS- TANCE, THERAPY AND BIOMARKERS</b>
09:50	Coffee break & Exhibition visit
10:30 11:25	<b>SESSION 4 - METABOLIC CONTROL OF DRUG RESIS- TANCE, THERAPY AND BIOMARKERS</b>
11:25	<b>Closing Keynote</b>
12:05	<b>Closing remarks and departure</b>



6<sup>TH</sup> EDITION

# METABOLISM & CANCER



## ORGANIZATION

**Com&Co Events**  
**Valentine Dupendant**

v.dupendant@comnco.com  
+33 (0)6 29 80 82 46

CONVENTION CENTER - LA GRANDE-MOTTE, FRANCE

## REGISTRATION FORM

Prof Dr Mr Mrs

Last Name: .....

First Name: .....

Institution / Company: .....

Department: .....

Address: .....

Post Code: .....

City: .....

Country: .....

Phone: .....

Email: .....

## REGISTRATION FEES

	BEFORE JULY 7 <sup>TH</sup> , 2025	AFTER JULY 7 <sup>TH</sup> , 2025
<b>Researchers &amp; Post Doc</b>	<b>275€</b> (VAT incl.)	<b>345€</b> (VAT incl.)
<b>Students</b>	<b>170€</b> (VAT incl.)	<b>210€</b> (VAT incl.)
<b>Industry</b> (not official partner of the conference)	<b>800€</b> (VAT incl.)	

**Congress Dinner** at *Domaine de Fangouse*. **80€**  
Thursday October 9<sup>th</sup> from 8.00 pm (VAT incl.)

**Accompanying person:** **80€**  
(VAT incl.)

## MEANS OF PAYMENT

### BY CREDIT CARD

(Visa / Mastercard / no other card)

on protected payment Paybox online form,  
directly on the website [www.comnco.com](http://www.comnco.com)  
Please indicate **Your Name**  
+ **METABOLISM & CANCER** in the part:  
"Additional details".

### BY CHECK ENCLOSED

make check in euro payable in France  
**TO COM&CO EVENTS**

### BY BANK TRANSFER TO COM&CO EVENTS

Bank: Société Générale  
IBAN : FR76 3000 3035 6200 0200 2152 134  
BIC : SOGEFRPP

## TO BE RETURNED BY

**POST:** Com&Co Events,  
3 rue Sainte-Adélaïde  
13004 Marseille, France

**FAX:** +33 (0)4 96 15 33 08

**EMAIL:** [l.ageon@comnco.com](mailto:l.ageon@comnco.com)

By registering to this congress, we warn you that  
you accept our general conditions of sale.  
You can read them here: [www.comnco.com/cgv](http://www.comnco.com/cgv)

## ONLINE REGISTRATION

Access the registration  
platform directly by  
scanning the QR code  
opposite:



[WWW.METABOLISM-CANCER.COM](http://WWW.METABOLISM-CANCER.COM)